

US Centrifuge has developed an Affordable High-Capacity Low-Pressure Basket Strainer for the removal of damage causing and system clogging debris. Debris is captured in the large stainless steel mesh strainer basket to prevent system components such as pumps, piping, instruments, and centrifuge inlets from clogging. The line is must be temporarily stopped so the strainer basket can be periodically removed for cleaning or replacement.



**A few reasons for the popularity of this unit:**

1. Unusually large strainer basket capacity provides long runtime between clean outs.
2. The free straining area is a least 6 times the cross-sectional pipe area.
3. No tools are needed to open the cover or remove the strainer basket.
4. The lid and basket can be removed quickly.
5. Reusable stainless steel strainer basket
6. Safe and simple handling.
7. The strainer housing comes standard with a threaded 1" NPT drain fitting.
8. High capacity up to 200-gpm with low-pressure drop.
9. Affordable price and quick delivery.



The basket is the heart of our strainer and is designed to be both effective and durable to perform its function correctly. Standard baskets with ½" holes and optional basket with ¼" holes meet the needs of many applications.



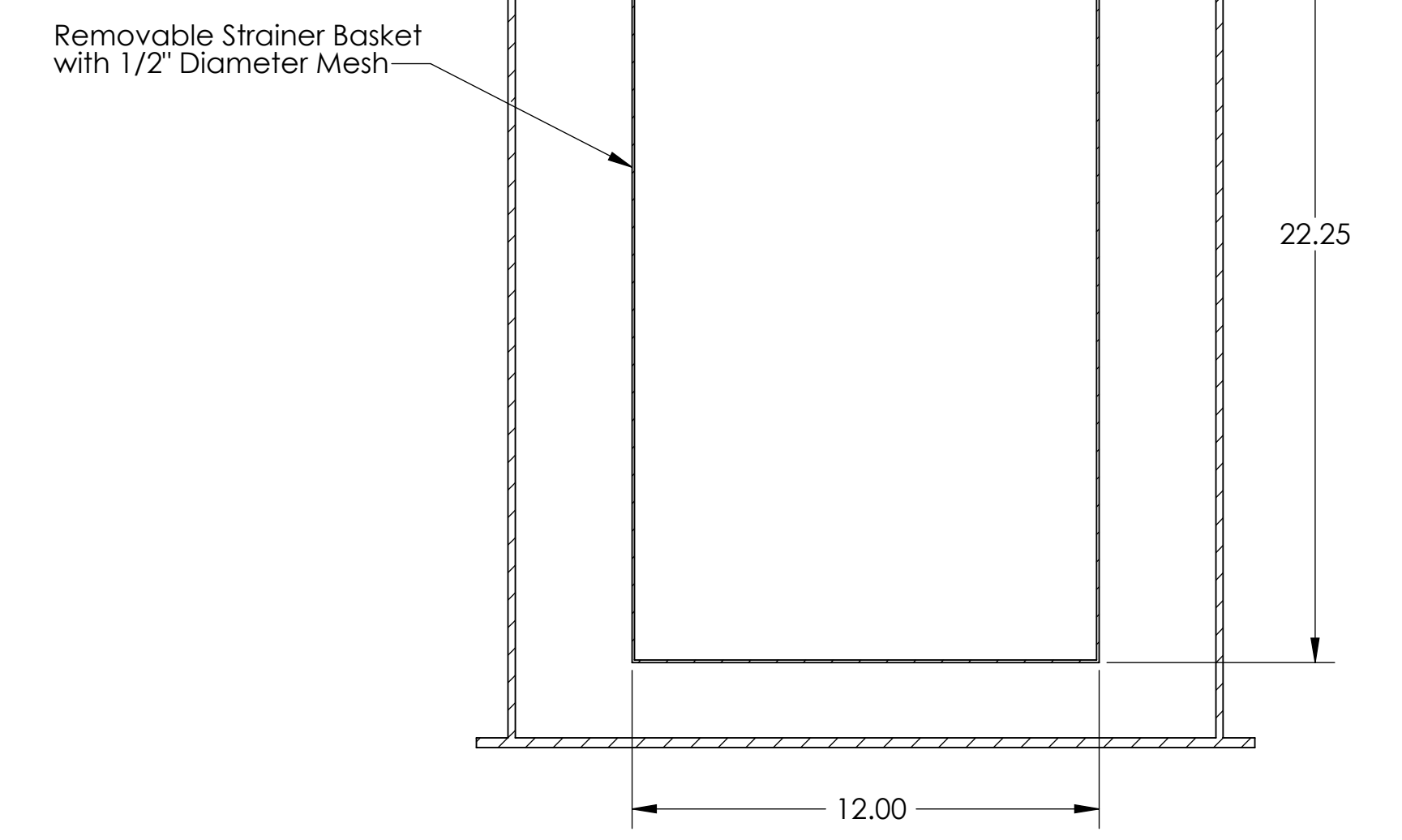
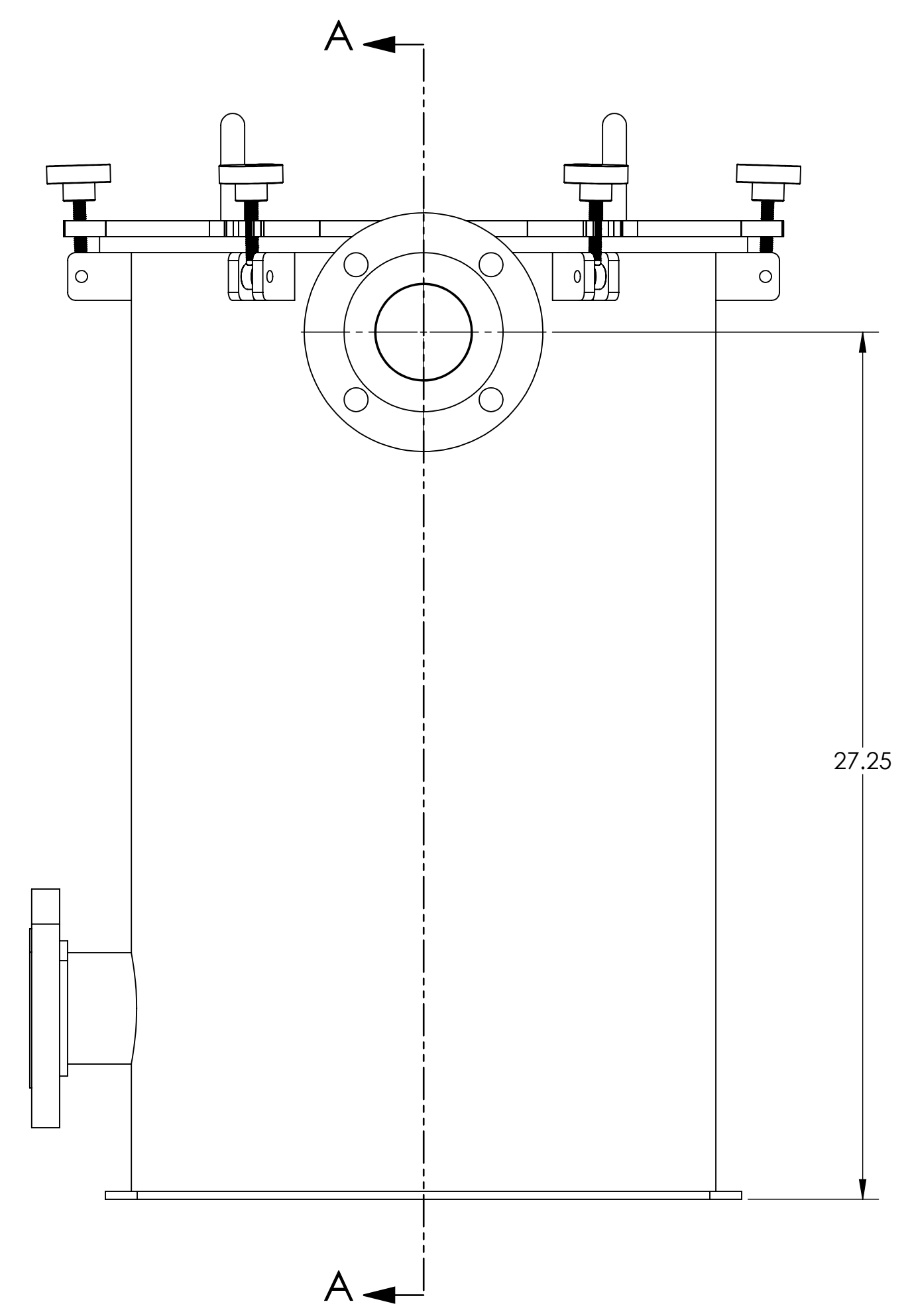
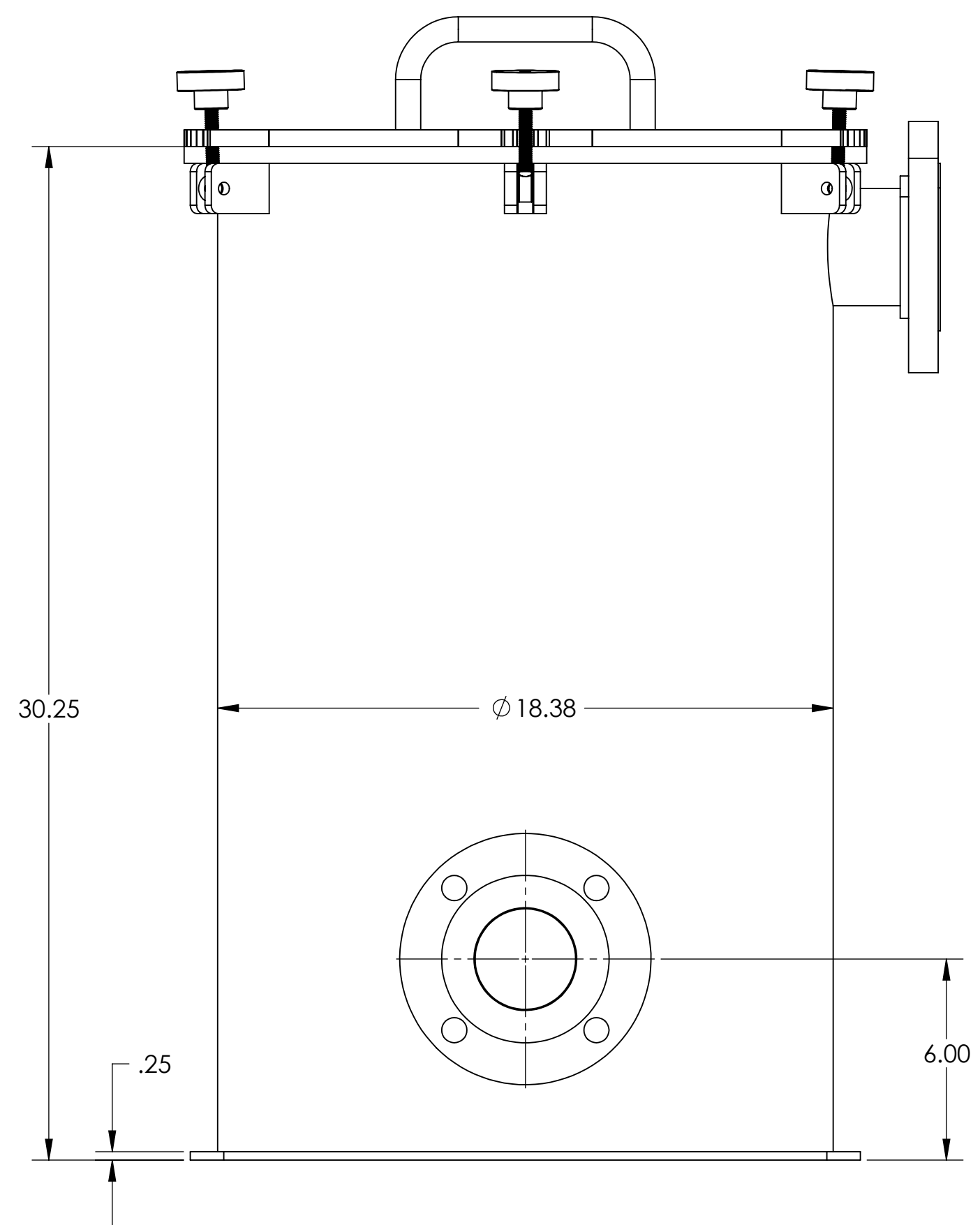
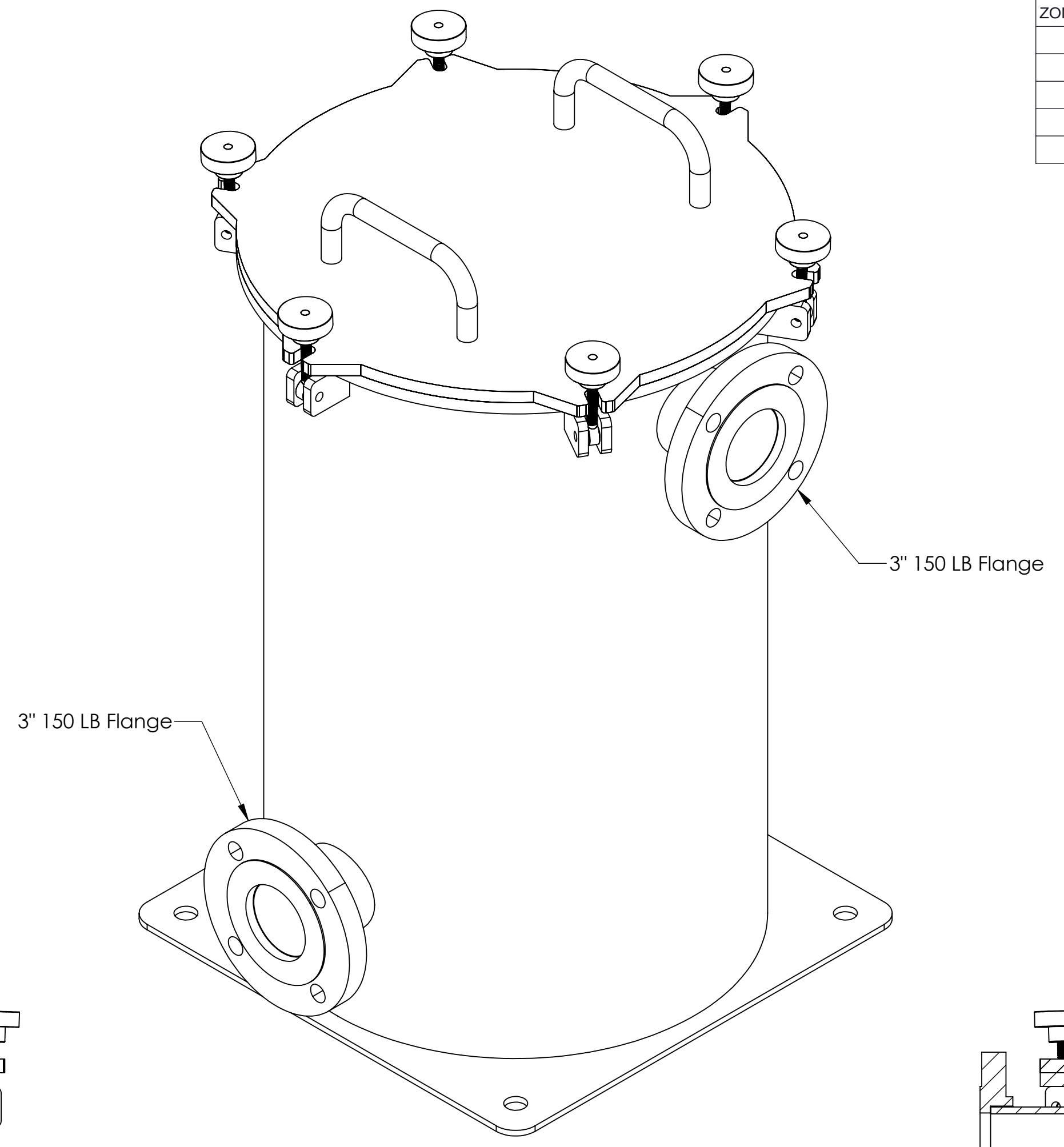
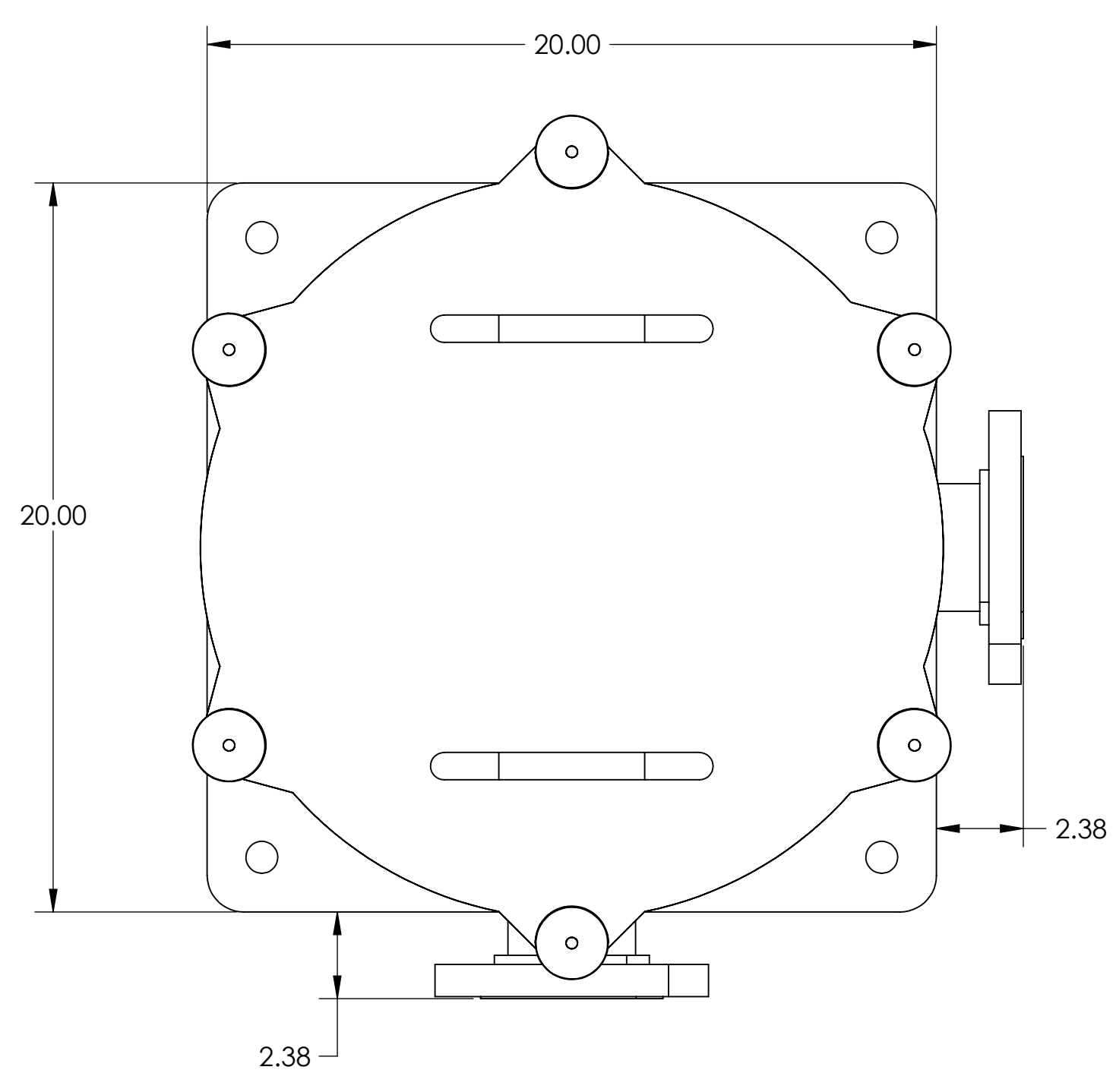
**Specifications:**

- Carbon steel housing with powder coated finish
- 3" 150-lbs flanged inlet and outlet fitting
- Stainless steel basket with ½ holes
- Maximum pressure 60-psi
- Maximum flow 200-gpm



REVISIONS					
ZONE	LTR	DESCRIPTION	CHG.NO.	DATE	APPROVED

LAST LETTER USED:



SECTION A-A

**COMPANY CONFIDENTIAL**

THIS DRAWING IS THE PROPERTY OF US CENTRIFUGE AND IT MUST BE ACCOUNTED FOR AND RETURNED UPON DEMAND. INFORMATION HERIN IS COMPANY CONFIDENTIAL AND MUST NOT BE COPIED, REPRODUCED, DUPLICATED, DISCLOSED TO OTHERS IN WHOLE OR IN PART, OR SENT OUTSIDE THE COMPANY WITHOUT WRITTEN AUTHORIZATION.

		DWG NO. <b>P1149A</b>	
The Liquid-Solid Separation Experts		TITLE <b>18" Diameter Strainer 3" 150# Flanged Inlet/Outlet</b>	
UNLESS OTHERWISE SPECIFIED DIMENSIONS ARE IN INCHES. TOLERANCE ON 2 PLACE 3 PLACE ANGLE ±.01 ±.005 ±0.30°		THIRD ANGLE PROJECTION	
MATERIAL: SEE NOTE		DATE: 8/13/07	
Drawn: Ken Forsha		Check: S. BEHRENS	
NEXT ASSY: APPLICATION		SCALE: None	
MODEL:		SHEET: 1/1	