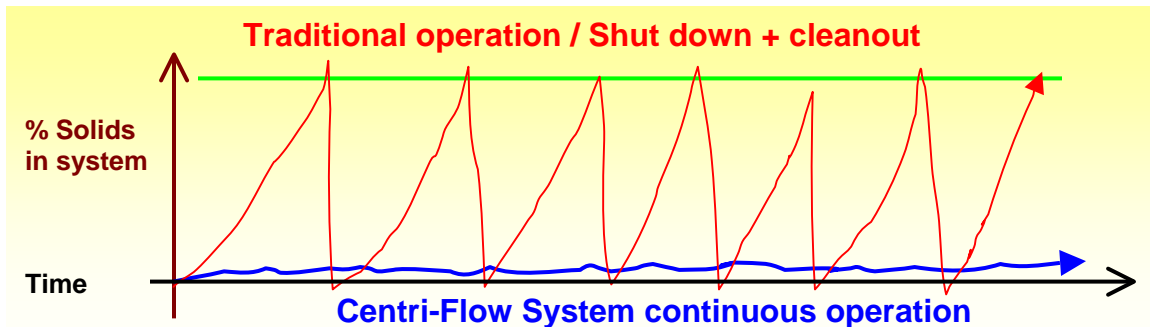




The US Centrifuge “Centri-Flow” system is a complete pre-engineered “closed-loop” re-circulating liquid filtration / fluid clarification system typically applied to glass, ceramic, and metal grinding coolants as well as other industrial fluids. “Centri-Flow” systems often replace the

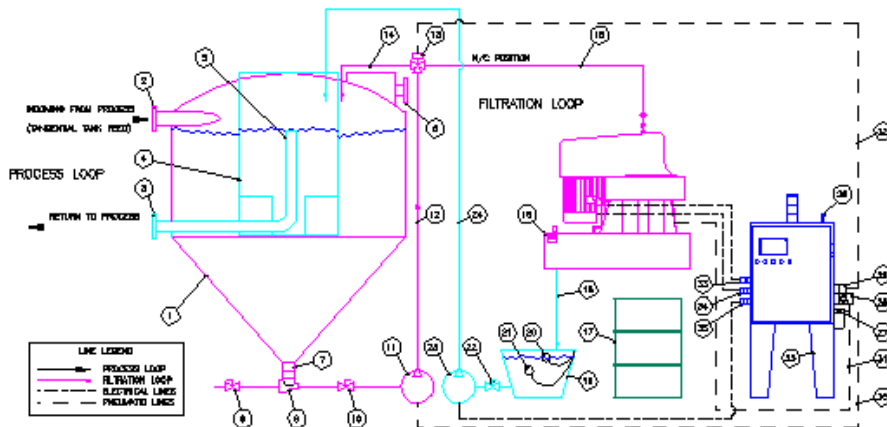
traditional floor pit and / or settling tank systems, which typically provide inadequate filtration and can be costly and difficult to maintain and cleanout. Unlike floor pit and settling tank systems “Centri-Flow” systems are designed to provide a continuous and consistently low minimum level of suspending solids and extend the life of the working liquid / fluid while providing a low maintenance and environmentally effective method of separating and handling the separated solids / sludge.



A “Centri-Flow” system combines the most appropriate centrifuge model and size cyclonic tank technology integrated together with all the necessary accessories to construct a complete pre-engineered “closed-loop” re-circulating liquid filtration / fluid clarification system. The cyclonic tank serves as the primary liquid reservoir and solids concentrator while the centrifuge works as a continuous side stream filter separating the suspended solids from the concentrated liquid / fluid from the bottom of the cyclonic tank. The clean liquid / fluid in the tank and the clarified liquid from the centrifuge are combined and returned to the process.

US Centrifuge was the first to pioneer and develop the cyclonic tank technology for use with centrifugal filtration equipment in 1997 and since that time has sold over 150 “Centri-Flow” systems worldwide. Standard “Centri-Flow” systems range from cyclonic tank sizes of 250-gallons up to 2,500-gallons and are designed to integrate the entire range of US Centrifuge centrifuges including the manual clean model M412, the automatic self-cleaning Duramatic A420 & A440, and the automatic self-cleaning Supramatic A460.

By matching the appropriate tank size and centrifuge model, “Centri-Flow” systems are designed and configured to suit each customer’s individual application. US Centrifuge will size, design, and configure a system that suits your facility and specific application requirements.

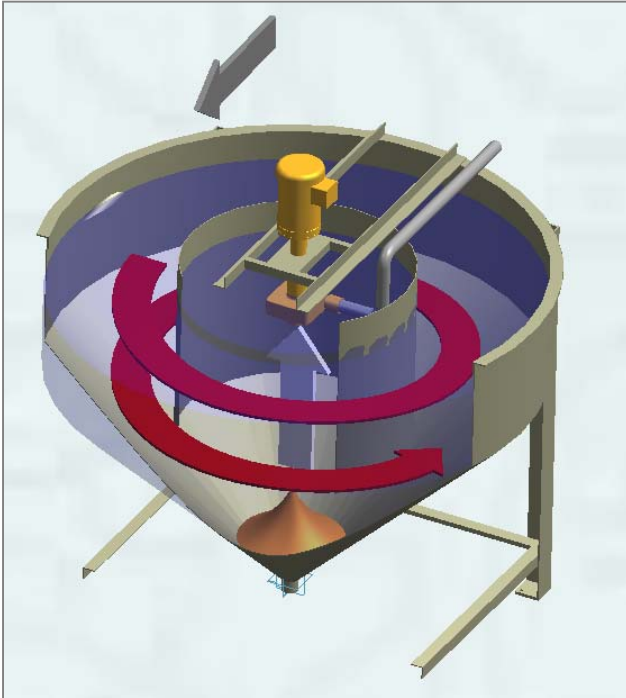


The illustration features an A242 CF-1500 system including:

- 1500-gallon “Centri-Flow” tank
- Model A242 Centrifuge
- Centrifuge feed pump and piping
- System controls
- Process return pumps and piping
- Catch tank and lift pumps and related system accessories
- Ships pre-assembled and ready to install

Customized “Centri-Flow” systems can be designed and built for unique and / or specific customer application or facility requirements.

The Cyclonic “Centri-Flow” tank technology: Dirty liquid from the application process enters through the tangent inlet of the tank causing the liquid to rotate creating a cyclonic action. The liquid segments and flows under the circular weir



where flow breakers stop the liquid rotation. The liquid rises vertically and either overflows a standpipe or is pumped directly back to the application process. The cyclonic action of the conical tank deposits the suspended solids in the bottom of the tank. The centrifuge takes its feed from the bottom of the tank and serves as a continuous side-stream filtration loop removing the concentrated solids from the process liquid.

Cyclonic tank advantages: Segregated clean and dirty liquid sections

- Concentrates suspended solids feed to the centrifuge
- Improves centrifuge performance
- Minimizes tank and system cleaning
- Tangent inlet absorbs incoming flow gently



Top view
Centri-Flow tank
and circular weir

“Centri-Flow” system advantages:

- Continuously maintains a low level of suspended solids
- Fully integrated system components
- Tank includes side-stream filtration loop
- Flexible design and system configuration
- Installation is quick and easy
- Allows for the reduction of liquid volume



Actual customer installation in automotive glass fabrication facility showing tank system installed / clean coolant return pump tank / separated solids cake in tip-hopper for easy disposal.

Proven applications include:

- Glass, ceramic, metal, and carbide grinding coolants and oils
- Vibratory / mass finishing solutions
- Washing solutions
- Industrial wastewater recycling

What customers are saying about US Centrifuge

"Originally We bought four of the other companies machines, and now we're replacing everyone of them with US Centrifuge units".

"In a side by side test, the US Centrifuge equipment out performed the competitive units we tried 2 to 1".

"We installed two US Centrifuge units and a central coolant system, and it paid for itself in only 11 months".

.The centrifuge and tank system we purchased from US Centrifuge has worked so good, we bought a second system for the rest of our plant..

"US CENTRIFUGE HAS HELPED EXTEND WHEEL LIFE 20%".

"One machine is able to handle the swarf from two bevelers without any problems, and we can run more quality inches per minute".

"The centrifuge did such a good job filtering the coolant we were able cut our coolant volume by 50% and have cleaner coolant".

"We went from switching over and cleaning our 10,000 gallon coolant tanks every 8 hour shift to once every 72 hours".

"We bought five US Centrifuge units and junked the other machines".

"US Centrifuge has exceeded our expectations with its quality construction and high performance. In addition, the service department has been wonderful to work with".

"Since we installed the US Centrifuge unit and tank package we haven't had to clean out anything for six months and counting".

"WE LOOKED AT ALL THREE COMPETING UNITS AND US CENTRIFUGE IS BY FAR THE BEST QUALITY AND MOST RELIABLE UNIT AVAILBLE".

"We don't worry about wet sludge going to landfill anymore, the centrifuge cake is dry".

"These machines have become vital to our production".

Basic questions required for sizing a “Centri-Flow” system:

Type and Number of Machines on System:

GPM Flow and Pressure Requirement per Machine:

Total System Flow Requirements:

Floor Pit: Yes / No / To be installed (size for a minimum of 2 x total max flow)

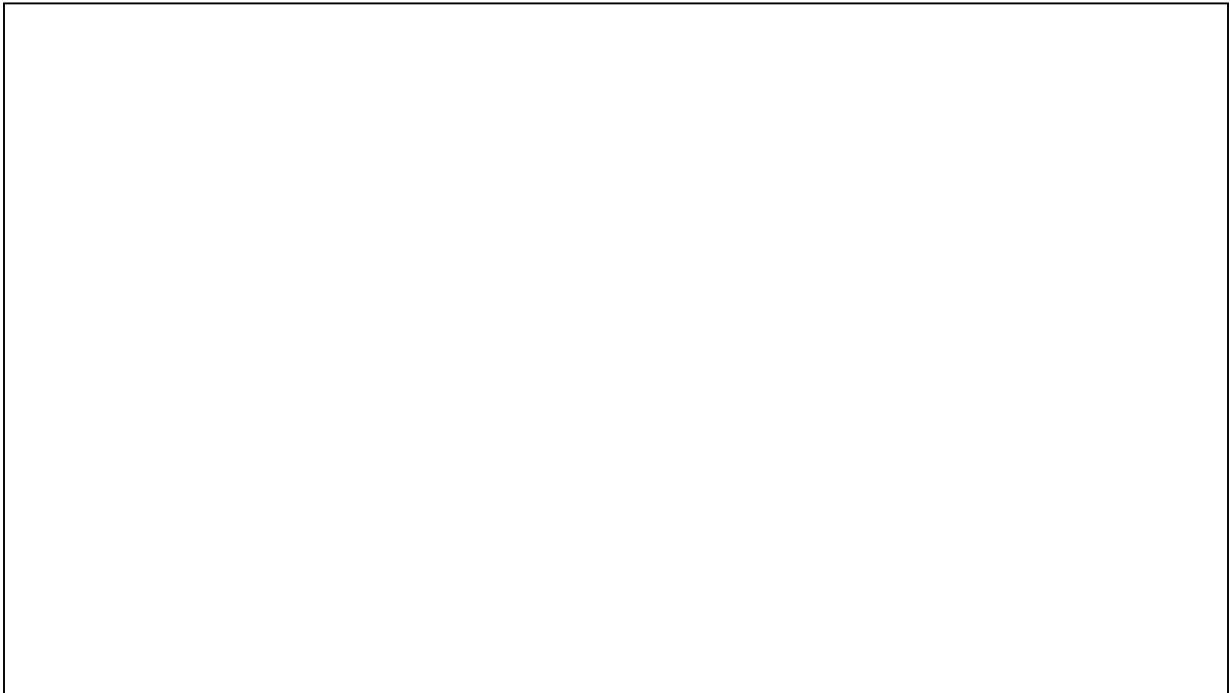
Pit Pump Required with System: Yes / No

Return Pump Tank Required with System: Yes / No

Return Pumps Required with System: Yes / No (Description-_____)

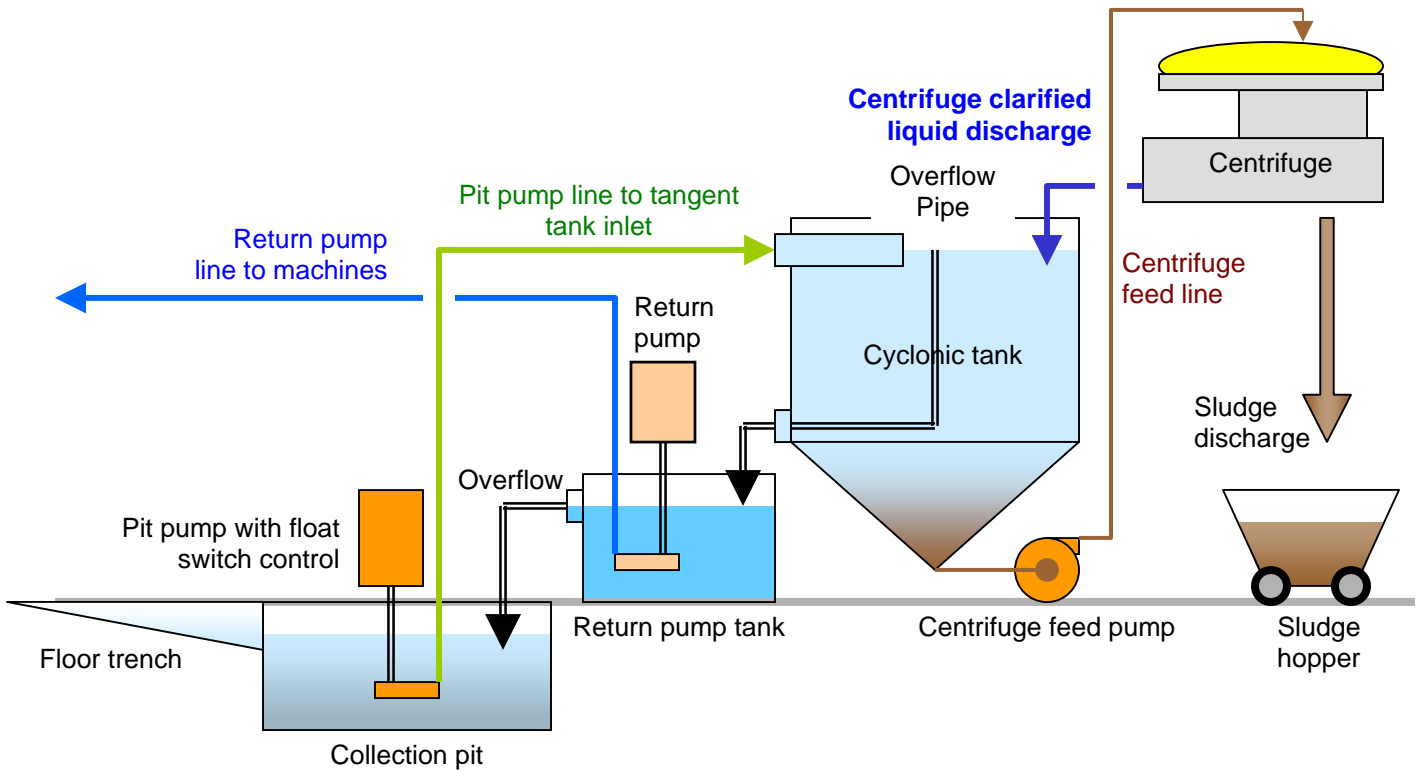
Plant Voltage: 208 / 240 / 480

Space Available / Attach sketch of plant layout / fax US Centrifuge @ 317-299-2284



System Set-up Option "A"

"Centri-Flow" System with Cyclonic Tank Overflow Return Pipe Spilling into a Separate Pump Return Tank:



System Set-up Option "B"

**Centri-Flow System with Integrally Mounted Return Pump
within the Center Weir Section of the Cyclonic Tank:**

